

Installation Quick Start Guide for RMX 4000

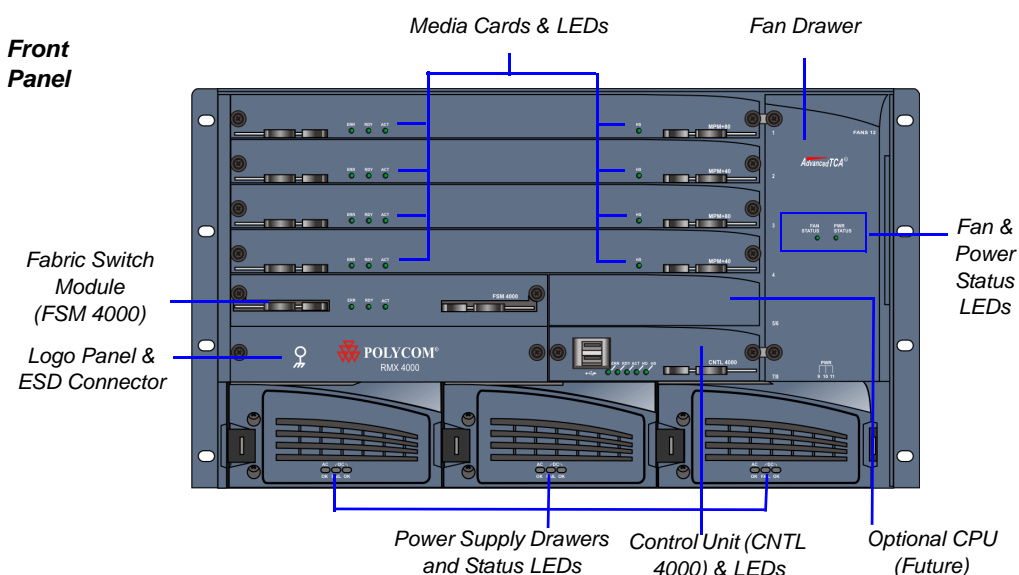
Basic Setup



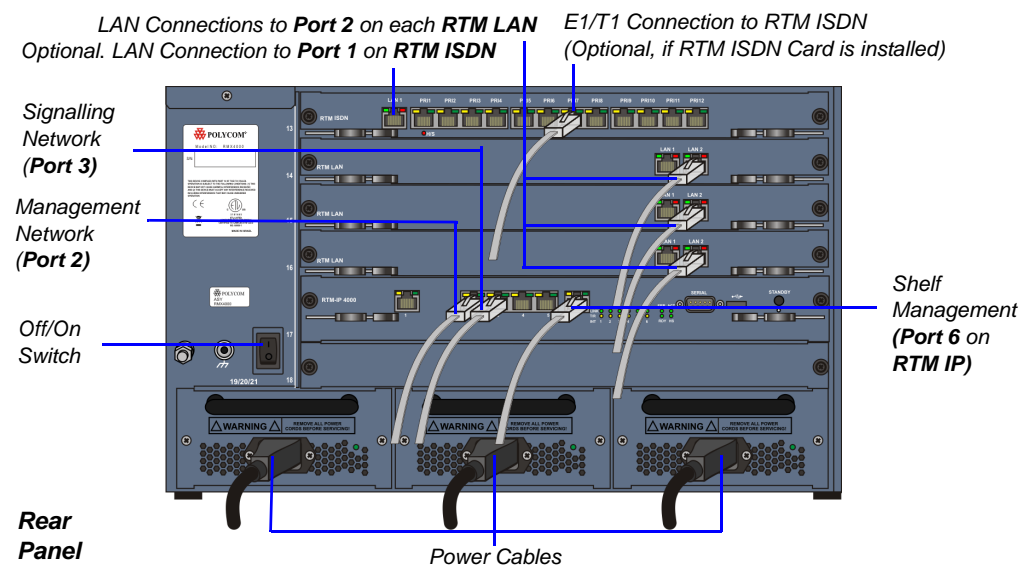
Before installing the RMX4000 and performing the Basic Setup, please read the *Polycom RMX 4000 Hardware Guide for the description of:*

- General Safety Precautions
- Unpacking, Rack mounting instructions, and connecting a DC system
- Installing the RTM ISDN card(s) if the kit is shipped with the system

Front Panel



>> Connect the cables to the rear panel of the RMX 4000 as described below:



Rear Panel



- Two people are required to lift the MCU out of the box and when installing it in a rack.
- LAN 4, LAN 5 and the Serial ports are only for debugging and not for customer use.
- Do not remove the protective plastic caps from LAN 1, LAN 4 and LAN 5 ports.

Configuring the LAN Properties on the USB Key

- 1 Insert the *USB key* provided with your system into the PC workstation. The *Polycom Documentation* window opens.

In Windows XP:

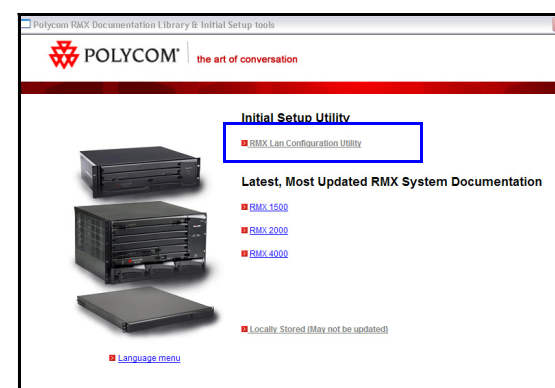
- a The **Polycom Documentation** option is automatically selected. Click **OK**.

In Windows 7:

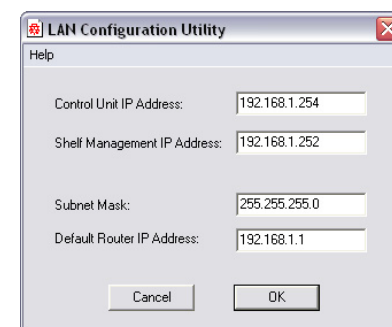
- a Select **Open Folder to view files using Windows Explorer**.
- b Double-click the **index.hta** file.

The *Language Menu* opens.

- 1 Select the documentation language.
- 2 In the *License Agreement* window, click the **Accept Agreement** button.
- 3 In the *Initial Setup Utility*, click the **RMX LAN Configuration Utility** hyperlink.



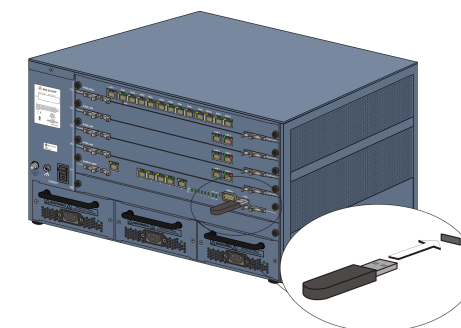
The *LanConfigUtility* dialog box opens.



- 4 Modify the parameters in the utility's dialog box using the information supplied by your network administrator.
- 5 Click **OK**.
- 6 Remove the USB key from the PC.

First-time Power-up and Connection to MCU

- 1 Insert the *USB key* containing the modified IP addresses in the USB port on the RMX's back panel.



- 2 Power the RMX **ON**. The FAN STATUS and PWR STATUS LEDs turn ON.

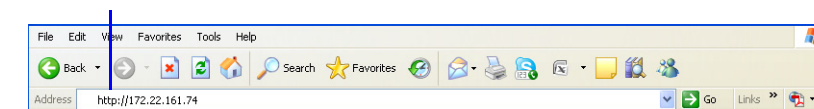
System power-up sequence may take approximately 10 minutes.

During this time, the parameters in the **lan.cfg** file are uploaded from the USB key to the RMX's memory and applied during the power-up sequence.

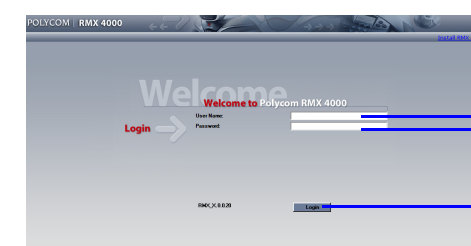
Wait for the upload process to complete. Initially all the ERR/RDY/ACT LEDs flicker and flash. Upload is completed when all the LEDs turn off and only the red ERR LED (on the CTNL unit) remains ON.

It remains ON until the *Default IP Network Service* is configured.

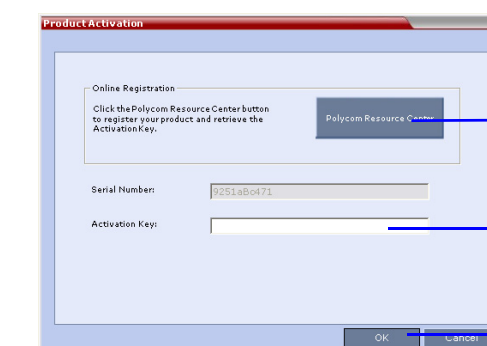
In the browser, enter the IP address of the RMX Control Unit and press Enter.



- 3
- 4 Once the *RMX Welcome* screen is displayed, remove the *USB key* from the RMX.



- 5




- 6

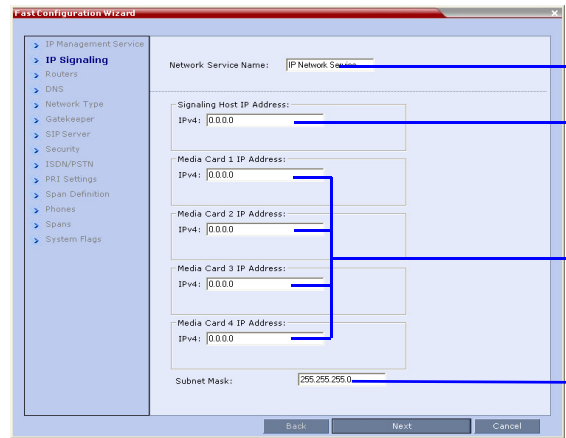
The *Media card* ERR/RDY/ACT LEDs flicker, until only the RDY LED turns ON.

Modifying the Default IP Service

This section describes the definition of H.323 Network Service. For detailed description of H.323, SIP and ISDN Network Service definitions, see the *RMX Getting Started Guide*, “First Time Installation and Configuration”.

 On the RMX 4000, IPv4 is the default protocol for setting the Network Service in the *Fast Configuration Wizard*.

In the *Fast Configuration Wizard*, select **Next** to move from one window to another.



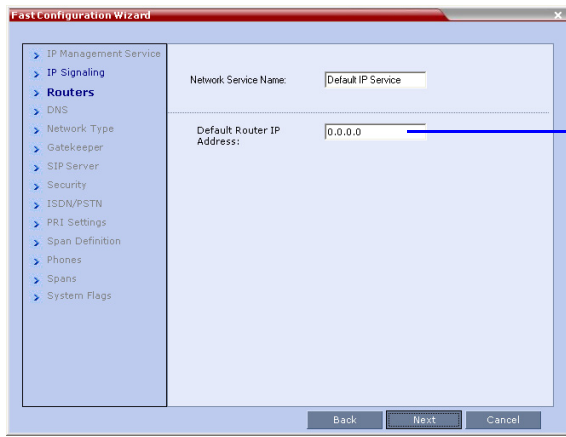
1

Change the default service name if required.

Enter the address to be used by IP endpoints when dialing in to the MCU.

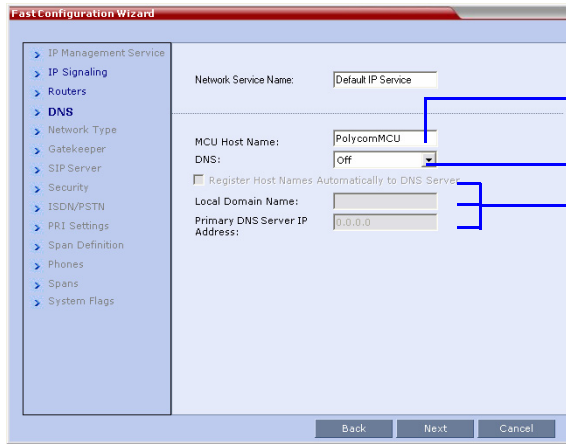
Enter the IP address(es) of the media card(s).

Enter the subnet mask of the MCU.



2

Enter the IP address of the default router.



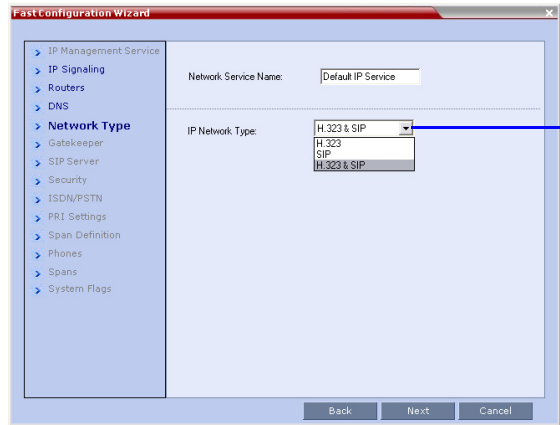
3

Enter the name of the MCU on the network.

Optional. Select **Specify** to define a DNS server.

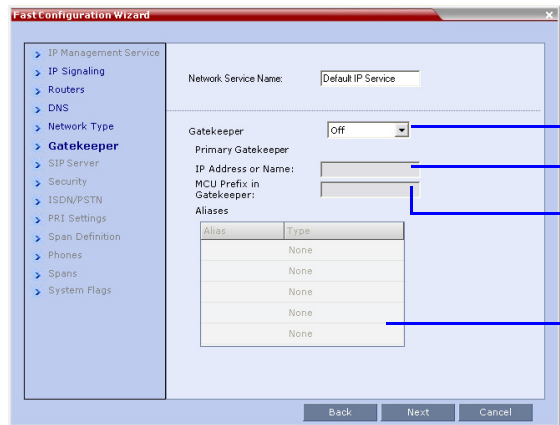
Optional. Define the DNS server properties:

- Registration mode
- The name of the MCU domain
- The static IP address of the primary DNS server



4

Select **H.323** as the IP Network Type.



5

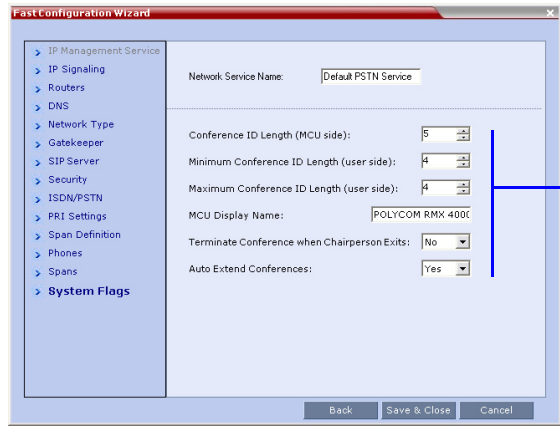
Select **Specify** to configure the gatekeeper parameters.

Enter gatekeeper's host name or IP address.

Enter the string with which the MCU registers itself with the gatekeeper.

Enter the alias that identifies the RMX's Signaling Host within the network. Up to five aliases can be defined for each RMX.

6 In the IP Network Service creation confirmation, click **OK**.



7

Optional. Modify the default settings of the system flags that define the general system behavior such as the number of digits in the conference ID assigned by the MCU.

These flags can be modified later, if required, by selecting the *System Configuration* option from the *Setup* menu.

- Click **Save & Close**.
- In the *Success Message* box confirming successful configuration, click **OK**.
- In the *Reset Confirmation* dialog box, click **Yes**.
- In the *Please wait for system reset* message box, click **OK**.
System restart may take up to 10 minutes.
- Refresh the browser periodically until the Login screen is displayed and *Login*. In the *Main Screen* an *MCU State* indicator displays the time remaining until the system start-up is complete.

MCU Status remains in *Major* and the red **ERR** LED on the RMX front panel remains **ON** until the default RMX User is replaced with a new *User* and the *RMX Time* is set:

- Create a new **User** with Administrator permissions. For more information see the *RMX 1500/2000/4000 Administrator's Guide*, “*Adding a New User*” on page **14-4**.
- Set the RMX time (**Setup > RMX Time**) and click **OK**. For more information, see the *RMX 1500/2000/4000 Administrator's Guide*, “*RMX Time*” on page **19-41**.
- Logout and Login using the new User name and password and then delete the default User (POLYCOM).

When the above steps are completed and if there are no *System Errors*, the green **RDY** LED on the RMX's front panel turns **ON** and the red **ERR** LED turns **OFF**.

Connecting to a Conference Directly or via Entry Queue

The RMX is shipped with pre-configured default conferencing entities that can be used to dial in and start conferences. Default (Transit) Entry Queue ID: 1000, default Meeting Room IDs: 1001, 1002, 1003, and 1004.

H.323 Participants

Dial: **[MCU Prefix in Gatekeeper][Conference or Entry Queue ID/Name]**

For example, if the MCU prefix in gatekeeper is 925, enter 925 or 9251000 to connect to the EQ or 9251001/2/3/4 to connect directly to the conference. When connected to the EQ, enter the destination Meeting Room ID (i.e. 1001, 1002, 1003 or 1004). Alternatively, use the EQ or conference name. For example, if the conference name is Maple_Room, the participant can dial: 925Maple_Room.

SIP Participants

Dial: **conference_routing_name@domain_name**. Conference routing name must be registered with the SIP server. For example, enter 1001@polycom.com if conference routing name is 1001 and the domain name is polycom.com.

ISDN and PSTN Participants

Dial one of the numbers assigned to the conference, Meeting Room or Entry Queue with the required country and area code. When connected to an EQ you are routed to the conference according to the destination conference ID you enter. For example, if the conference assigned dial in number is 4045555, dial this number with the appropriate area code (for example, 678) and country code (001).

Conference Control Using DTMF Codes

Operation	DTMF String	Operation	DTMF String
Play Help Menu	*83	Request private assistance	*0
Mute My Line	*6	Request assistance for conference	00
Unmute My Line	#6		
Increase Broadcast Volume	*9	Increase Listening Volume	*76
Decrease Broadcast Volume	#9	Decrease Listening Volume	#76
Invite Participant	*72	Change To Chairperson	*78
Start Click&View to modify personal layout	**	Show Number of Participants	*88